

Chantke®

air



DIGITAL TYRE INFLATOR

MODEL NO: CTIDG2

PART NO: 5060290

OPERATION & MAINTENANCE INSTRUCTIONS

UK
CA | CE



ORIGINAL INSTRUCTIONS

GC12/23

INTRODUCTION

Thank you for purchasing this CLARKE Tyre Inflator. The CTIDG2 can be used for inflating car, motorcycle and bicycle tyres. The tyre inflator is not waterproof and should not be used in any wet applications.

Before attempting to use the product it is essential that you read this manual thoroughly and carefully follow all instructions given. In doing so you will ensure the safety of yourself and that of others around you and you can also look forward to the product giving you long and satisfactory service

After removing the tyre inflator from its packaging, check that it has not been damaged in transit. Report any damage immediately to the CLARKE dealer where the item was purchased.

PRODUCT SPECIFICATIONS

Model	CTIDG2
Hose length	500mm
Max supply pressure	200psi
Max inflation pressure	174 psi
Max flow rate	500L/min @188psi
Accuracy	+/- 2psi @ 25-75psi
Ingress protection	IP44
Units of measurement	psi, kPa, bar
Working temperature	10 to 50oC
Dimensions (L x W x H)	890 x 85x 45 mm
Weight	0.85 kg
Inlet size	1/4 " BSP
Auto-Off	9 seconds
Battery Type	2 x AAA (included)

GENERAL SAFETY WARNINGS



WARNING: WHEN USING BATTERY POWERED TOOLS, BASIC SAFETY PRECAUTIONS SHOULD ALWAYS BE FOLLOWED TO REDUCE THE RISK OF FIRE OR PERSONAL INJURY. PLEASE READ ALL THE SAFETY AND OPERATING INSTRUCTIONS CAREFULLY BEFORE USING THIS PRODUCT

PERSONAL SAFETY

1. ALWAYS thoroughly familiarise yourself with this product and its operation and always read the instructions in this manual before using the product.
2. ALWAYS stay alert, watch what you are doing and use common sense when operating the tyre inflator. DO NOT use while you are tired or under the influence of medication, drugs or alcohol. A moment of inattention can result in personal injury.

WORKING CONDITIONS

1. DO NOT use the tyre inflator in a damp or wet environment.
2. DO NOT cover the tyre inflator.
3. ALWAYS use the tyre inflator in spaces with good all-round air ventilation and that the air intake air is dry and dust free.
4. Keep the work area clean and well lit. Floors should always be kept clear. Cluttered or dark areas invite accidents.
5. NEVER over-reach. Keep your proper footing and balance at all times to enable better control of the tyre inflator in unexpected situations.
6. ALWAYS use in a safe area away from traffic and other hazards.

GENERAL PRODUCT USE AND CARE

1. NEVER attempt to modify the fittings or attachments in any way. Doing so will invalidate the guarantee and could result in personal injury.
2. ALWAYS take care to maintain tyres to vehicle manufacturer's recommended pressures.
3. ALWAYS store the tyre inflator at moderate temperature and out of reach of children.
4. NEVER use this product if it appears defective or is operating abnormally: If the tyre inflator operates unusually or makes strange noises, switch off immediately. Arrange repairs by your CLARKE dealer.
5. NEVER attempt any repairs yourself. If you have a technical problem contact your local CLARKE dealer.

6. NEVER throw the product away with household waste or allow it to fall into a fire.

AIRLINE SAFETY PRECAUTIONS

1. Compressed air can be dangerous. Ensure that you are thoroughly familiar with all precautions relating to the use of compressors and a compressed air supply.
2. NEVER direct a jet of compressed air at people or animals.
3. ALWAYS ensure that the equipment/tool being used has a safe working pressure exceeding the output pressure of the compressor that it is connected to.
4. NEVER exceed the operating pressure stated in the specification.
5. ALWAYS ensure that the air supply is turned off and vent all compressed air from the air hose and the equipment attached to it before disconnecting air hoses or other equipment from your compressor.
6. Ensure all fixed air connections are properly sealed using ptfе tape or pipe sealant.
7. Check the airline pressure gauge periodically for accuracy and replace if damaged or inaccurate.

ENVIRONMENTAL RECYCLING POLICY



By purchasing this product, the customer is taking on the obligation to comply with current WEEE regulations.

This means that this product must not be disposed of with general household waste. It must be disposed of according to the laws governing Waste Electrical and Electronic Equipment (WEEE) at a recognised disposal facility.

This product contains valuable raw materials. Metal products should be taken to your local civic amenity site for recycling of metal products.

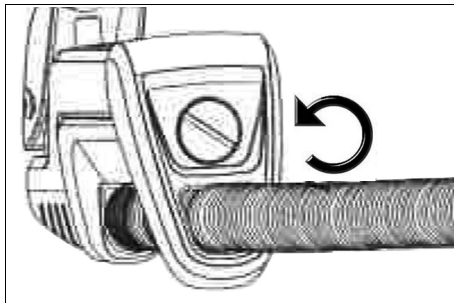
The batteries fall under the Waste Batteries and Accumulators Regulations 2009 and should be disposed of in a controlled manner.

PREPARATION

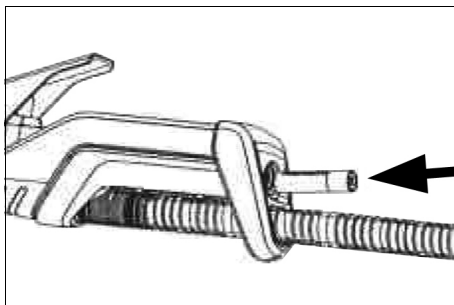
FITTING THE BATTERIES

The inflator requires 2 x AAA batteries. If the voltage of the batteries falls below 2.6 volts, the battery icon will flash continuously until it shuts down. If the voltage of the batteries falls below 2.5 volts the LOW "LO" battery icon appears while the power is on and then shuts down automatically. The batteries must be changed if the battery icon flashes.

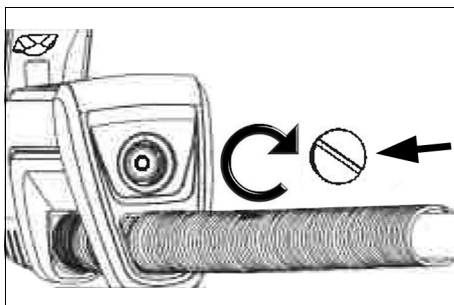
1. Unscrew the battery cap.



2. Slide the batteries into the tyre inflator with the positive end facing outwards.



3. Replace the battery cap carefully and DO NOT over tighten.



CONNECTING THE AIRLINE



CAUTION: THIS PRODUCT MAY HAVE A LOWER WORKING PRESSURE THAN SOME COMPRESSORS WILL SUPPLY, THEREFORE, AN AIRLINE REGULATOR SHOULD BE INSTALLED.

CAUTION: AIRLINE LUBRICATORS SHOULD NOT BE USED WITH THIS ITEM.

CAUTION: ALWAYS USE DRY FILTERED COMPRESSED AIR & AVOID UNDUE EXPOSURE TO MOISTURE.

1. Attach the airline hose to the tyre inflator and fully tighten. Use PTFE tape if needed. Turn on the air supply and check that the airline pressure does not exceed 13.8 bar (200 psi).
2. Ensure all fixed air connections are properly sealed using PTFE tape or pipe sealant.

AIRLINE ACCESSORIES AND EQUIPMENT

An extensive range of airline equipment is available from your CLARKE dealer including hoses, retractable hose reels, filter/regulators, in-line regulators, pressure gauges and safety goggles.

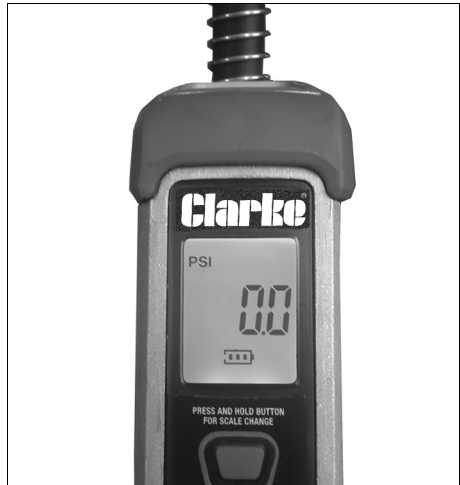
THE DISPLAY PANEL

Press and hold the button on the front of the unit to activate.

Once activated, press and hold the button for 2 seconds to change the unit of measurement to either psi, kPa or bar.

The display panel will illuminate and display as shown.

The display should time out and switch off after 9 seconds.



OPERATION

Under or over inflated tyres are dangerous. Consult the vehicle owners handbook before using this tyre inflator. Never exceed the maximum pressure of the tyre.

1. Remove the dust cap from the tyre valve and check that the tyre valve is clean before connecting.
2. Push the connector fully home onto the tyre valve. If the valve leaks, the connector may need repositioning. Correct position is confirmed by a steady reading on the gauge.
3. When connected correctly, the display will show the current pressure in the tyre. If this is the correct tyre pressure as stated in your vehicle handbook, remove the valve connector.
4. Check the tyre pressure on the display.
5. Depress the trigger to inflate the tyre. Re-check the tyre pressure. Note that when the trigger is depressed, the gauge will show the airline pressure, not the tyre pressure.
6. To deflate the tyre, partially depress the trigger and check the pressure again.
7. When the tyre pressure is correct, remove the connector. Replace the dust cap on the tyre valve.

IMPORTANT: The air pressure gauge on this product is for guidance only. It is important that you check the pressure with an approved, calibrated gauge.

8. DO NOT use damaged or leaking hoses. Occasionally clean the product and lubricate the trigger parts if required.

COMMON INFLATION PRESSURES

	PSI	KPA	BAR
Car	35 - 50	240 - 350	2.4 - 3.5
Motorcycle	26 - 40	180 - 275	1.8 - 2.75
Bicycle	35 - 100	240 - 690	2.4 - 6.9

CARE & MAINTENANCE

Keep the tyre inflator free of dirt and dust as far as possible. Wipe with a clean cloth or blow it down with compressed air at low pressure. DO NOT use cleaning agents or solvents as these may be aggressive to the plastic parts. Ensure that no water can get into the interior of the tyre inflator.

Your tyre inflator has been designed to give long and trouble free service. If, however, having followed the instructions in this booklet carefully, you encounter problems, take the item to your local CLARKE dealer.

Store the tyre inflator in a dry location.

USEFUL ACCESSORIES

Various airline components are available from your CLARKE dealer including:

Airline hoses (available in 10Mtr/15mtr lengths)

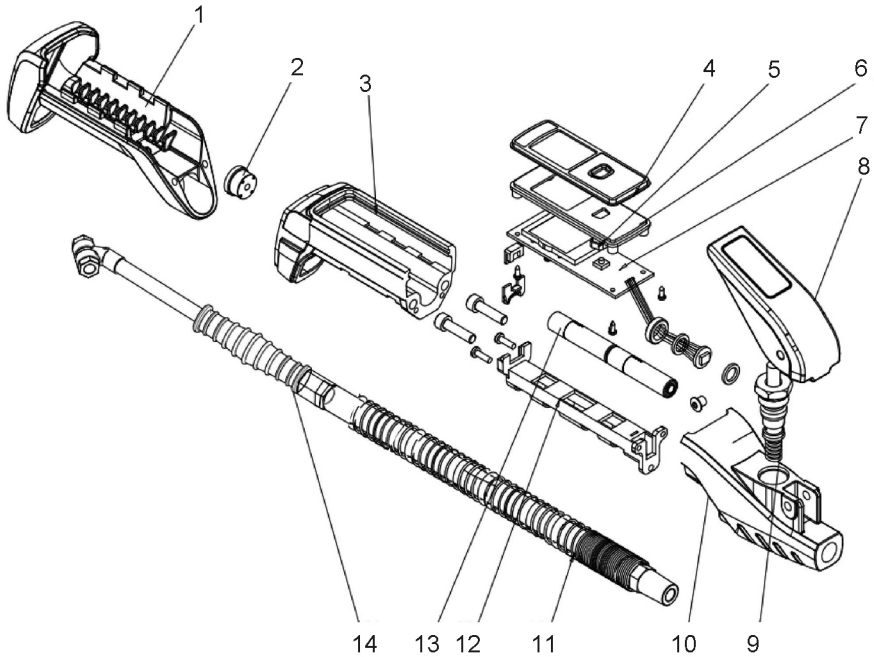
Recoil hose (available in 7.6 and 15 mtr lengths)

Hose reels

Airline fittings such as filters, regulators, connectors

See also the extensive range of CLARKE compressors and air tools.

COMPONENT PARTS



No	Description
1	Rubber sleeve
2	Battery cover
3	Valve housing
4	Transparent cover
5	Button
6	Circuit board support
7	Printed circuit board

No	Description
8	Trigger
9	Trigger valve assembly
10	Main body
11	Air hose assembly
12	Battery housing
13	Battery (AAA)
14	Air nozzle

DECLARATION OF CONFORMITY - UK



Clarke[®]
INTERNATIONAL

Hemnall Street, Epping, Essex, CM16 4LG

DECLARATION OF CONFORMITY

This is an important document and should be retained.

We hereby declare that this product(s) complies with the following legislation:

The Batteries and Accumulators (Placing on the Market) Regulations 2008

The Electromagnetic Compatibility Regulations 2016

The Restriction of the Use of Certain Hazardous Substances in Electrical and Electronic Equipment Regulations 2012

The following standards have been applied to the product(s):

US EPA 3052:1996, EN 55014-1:2017, EN 55014-2:2015, IEC 62321-3-1:2013

The technical documentation required to demonstrate that the product(s) meet(s) the requirement(s) of the aforementioned legislation has been compiled and is available for inspection by the relevant enforcement authorities.

The UKCA mark was first applied in: 2023

Product Description: Tyre Inflator
Model Number(s): CTIDG2
Serial/Batch Number: Refer to product/packaging label
Date of Issue: 30/10/2023

Signed:

J.A Clarke

Director

DECLARATION OF CONFORMITY - CE



Clarke[®]
INTERNATIONAL

Fitzwilliam Hall, Fitzwilliam Place, Dublin 2

DECLARATION OF CONFORMITY

This is an important document and should be retained.

We hereby declare that this product(s) complies with the following legislation:

2006/66/EC *Battery Directive*
2014/30/EU *Electromagnetic Compatibility Directive*
2011/65/EU *Restriction of Hazardous Substances (RoHS) Directive*

The following standards have been applied to the product(s):

US EPA 3052:1996, EN 55014-1:2017, EN 55014-2:2015, IEC 62321-3-1:2013

The technical documentation required to demonstrate that the product(s) meet(s) the requirement(s) of the aforementioned legislation has been compiled and is available for inspection by the relevant enforcement authorities.

The CE mark was first applied in: 2023

Product Description: Tyre Inflator
Model Number(s): CTIDG2
Serial/Batch Number: Refer to product/packaging label
Date of Issue: 30/10/2023

Signed:

J.A Clarke
Director

A SELECTION FROM THE VAST RANGE OF

Clarke®

QUALITY PRODUCTS



AIR COMPRESSORS
From DIY to industrial, Plus air tools, spray guns and accessories.

GENERATORS
Prime duty or emergency standby for business, home and leisure.

POWER WASHERS
Hot and cold, electric and engine driven - we have what you need

WELDERS
Mig, Arc, Tig and Spot.
From DIY to auto/industrial.

METALWORKING
Drills, grinders and saws for DIY and professional use.

WOODWORKING
Saws, sanders, lathes, mortisers and dust extraction.

HYDRAULICS
Cranes, body repair kits, transmission jacks for all types of workshop use.

WATER PUMPS
Submersible, electric and engine driven for DIY, agriculture and industry.

POWER TOOLS
Angle grinders, cordless drill sets, saws and sanders.

STARTERS/CHARGERS
All sizes for car and commercial use.



PARTS & SERVICE: 0208 988 7400

Parts Enquiries
Parts@clarkeinternational.com

Servicing & Technical Enquiries
Service@clarkeinternational.com

SALES: UK 01992 565333 or Export 00 44 (0)1992 565335

Clarke INTERNATIONAL Hemnall Street, Epping, Essex CM16 4LG
www.clarkeinternational.com